



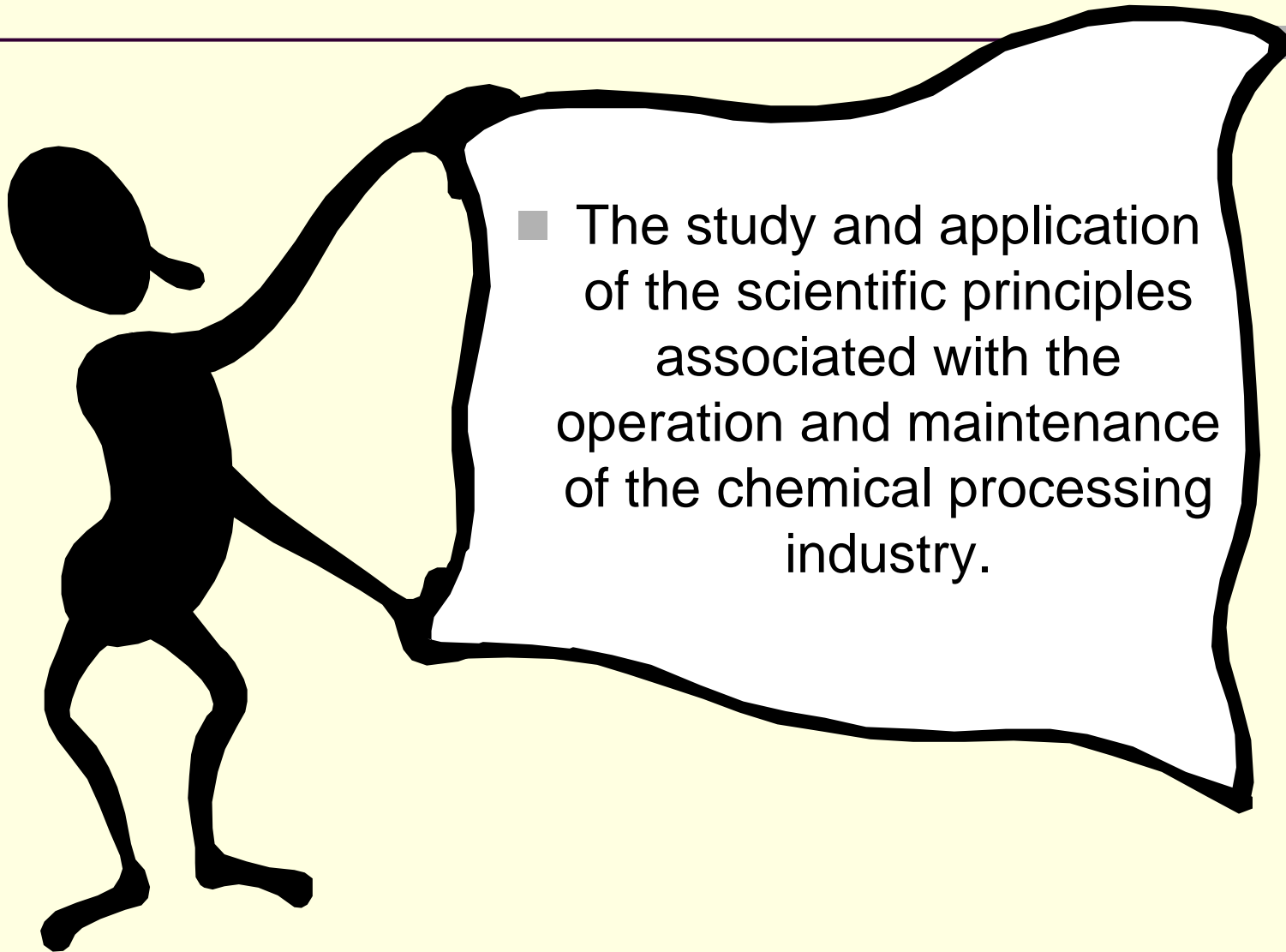
# Associate of Applied Science



*Process Technology*

# The Nature of Process Technology

---

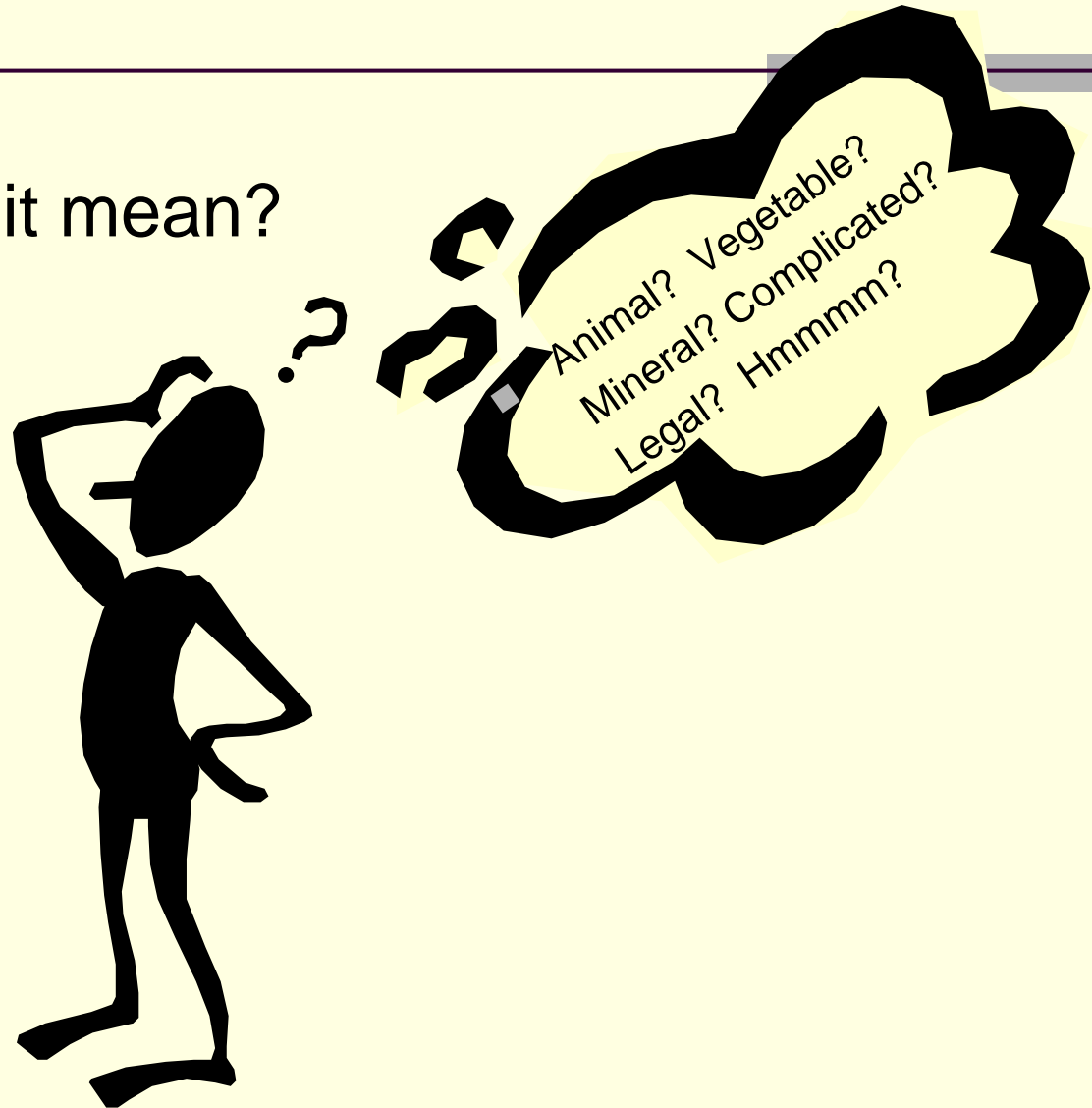


- The study and application of the scientific principles associated with the operation and maintenance of the chemical processing industry.

# The Nature of Process Technology

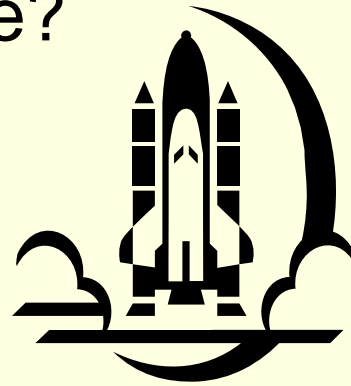
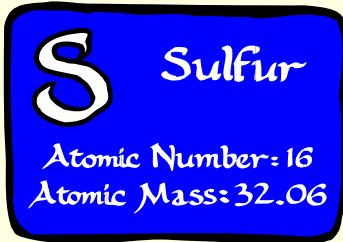
---

- What does it mean?



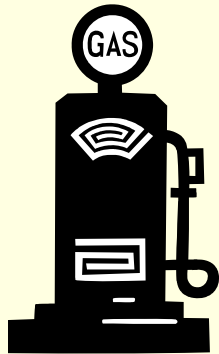
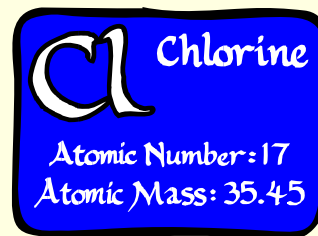
# The Nature of Process Technology

- What does it produce?



Propane

Plastics

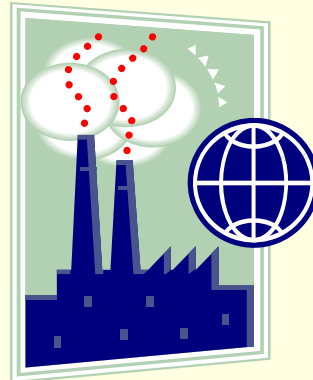


Wax



# The Nature of Process Technology

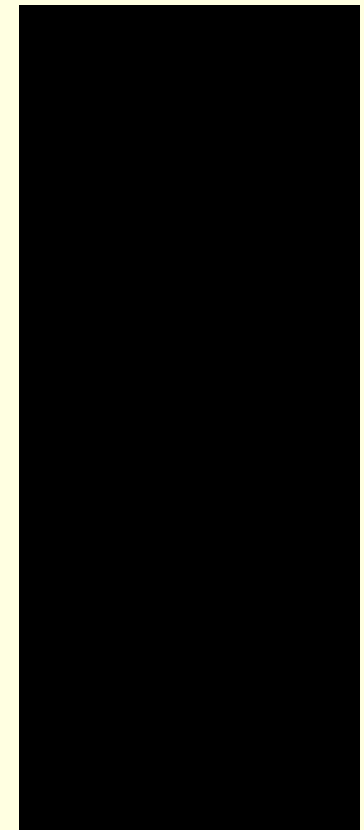
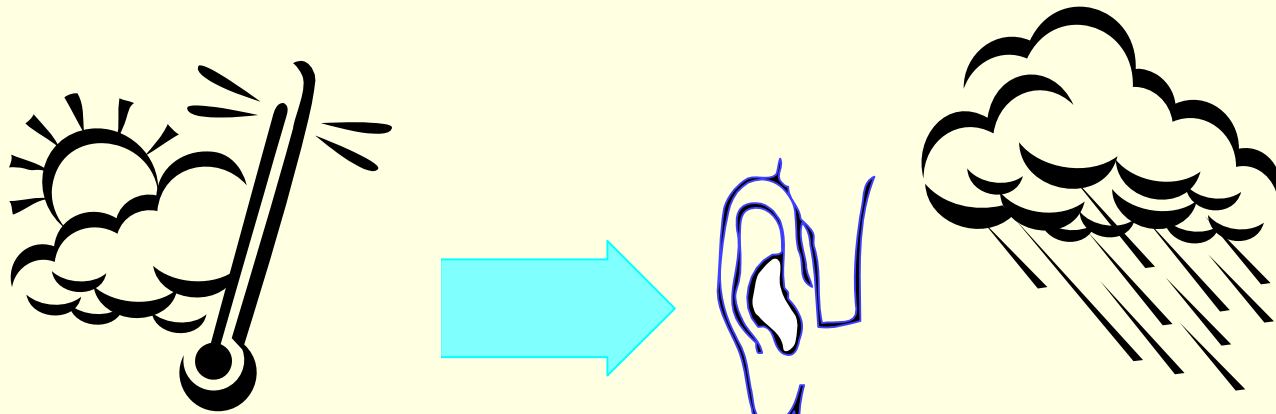
- Where does it happen?



Large, small, overseas, offshore, refineries, labs, offices, chemical plants, electrical plants, Westlake, Sulphur, Lake Charles, Baton Rouge, Houston, Galveston, Beaumont, New Jersey, Alaska, Africa

# The Nature of Process Technology

- What is the environment like?



# The Nature of Process Technology

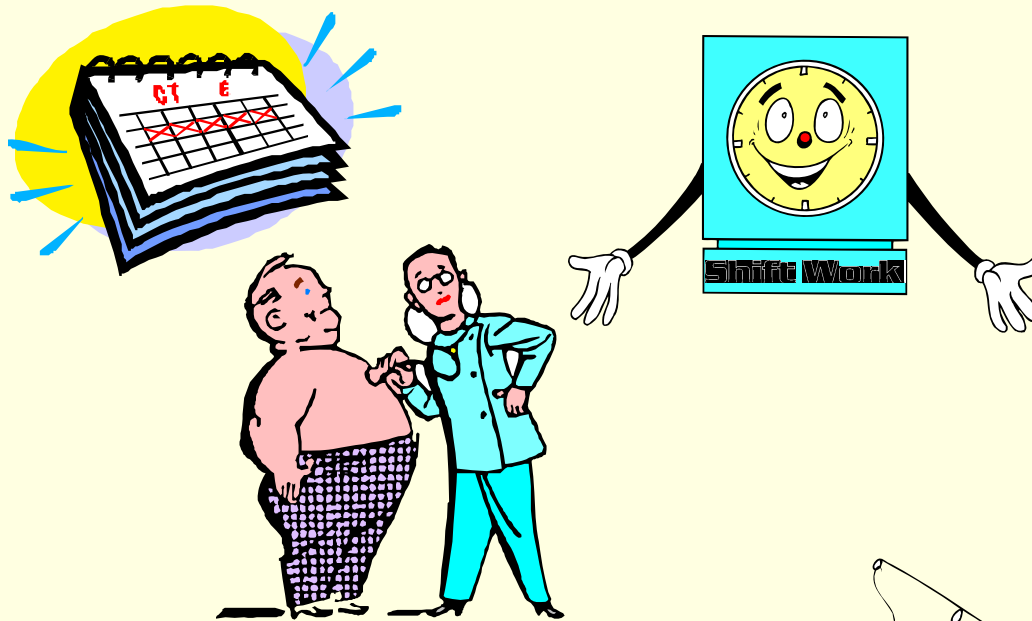
- What skills are required?



Math, Science, Critical Thinking, Decision Making, Communication skills, People skills

# The Nature of Process Technology

- What are the benefits?



One week off each month, shift work, recreational time, time for hobbies, health and retirement benefits, ability to afford new car, home, vacations



# The Nature of Process Technology

---

- Where would I work locally?



PPG

SASOL

Firestone

ConocoPhillips

Entergy

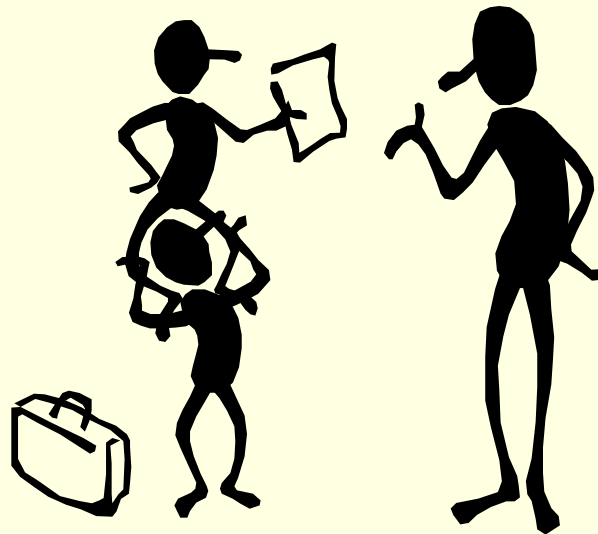


Basel

# Where Do I Begin?

---

- Apply to SOWELA Technical Community College
- Complete placement test
- Select PTEC™ curriculum
- PTEC advisor will guide course selection



# General Education Courses

- English
- Algebra
- Physics
- Chemistry
- Trigonometry
- Technical Writing
- Economics
- History
- Job Seeking Skills



# Technical Education Courses

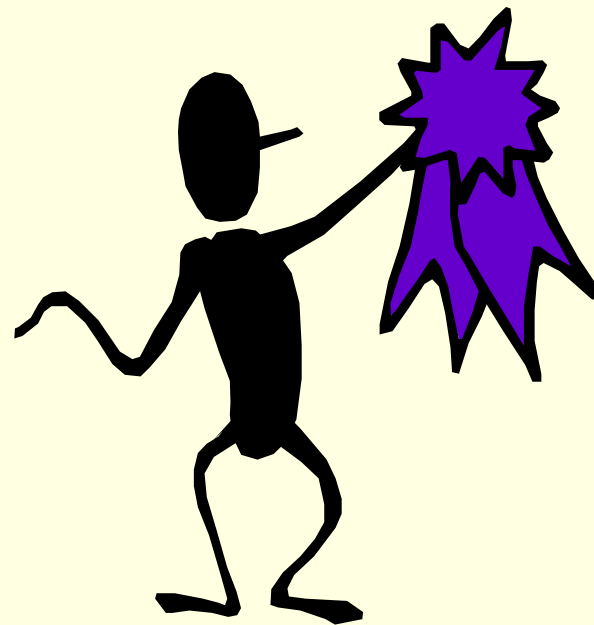
- Intro to PTEC™
- Plant Safety
- Computer Basics
- Process Instrumentation I
- Process Instrumentation II
- Process Equipment
- Statistical Quality Control
- Unit Operations
- Troubleshooting
- Mechanical Aptitude
- Fluid Mechanics
- Internship or Independent Study
- Capstone Project



# Is It Very Difficult?

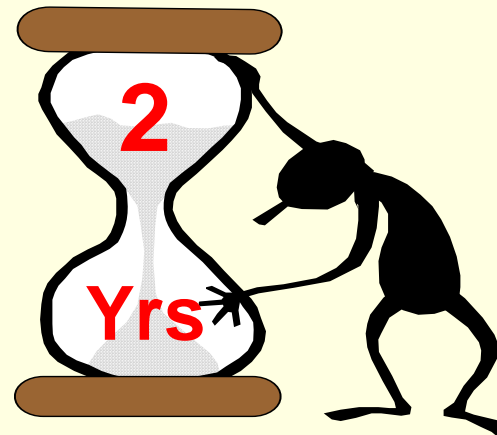
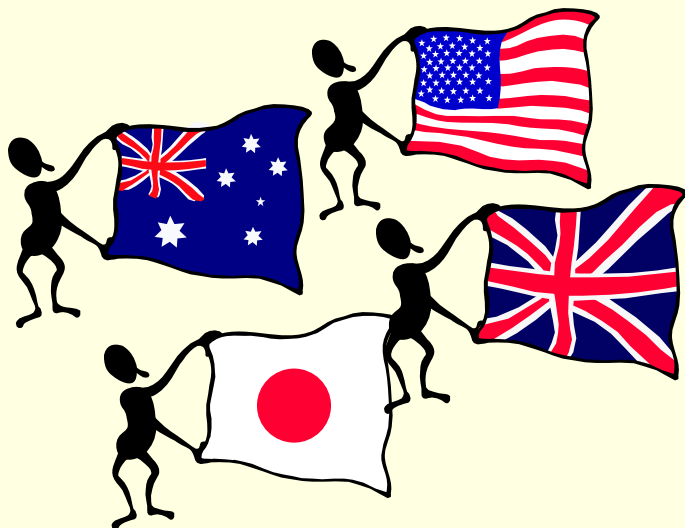
---

- Approximately 50% graduate
- In the history of the PTEC™ program at STCC, there have been numerous HONOR graduates (4.0) gpa



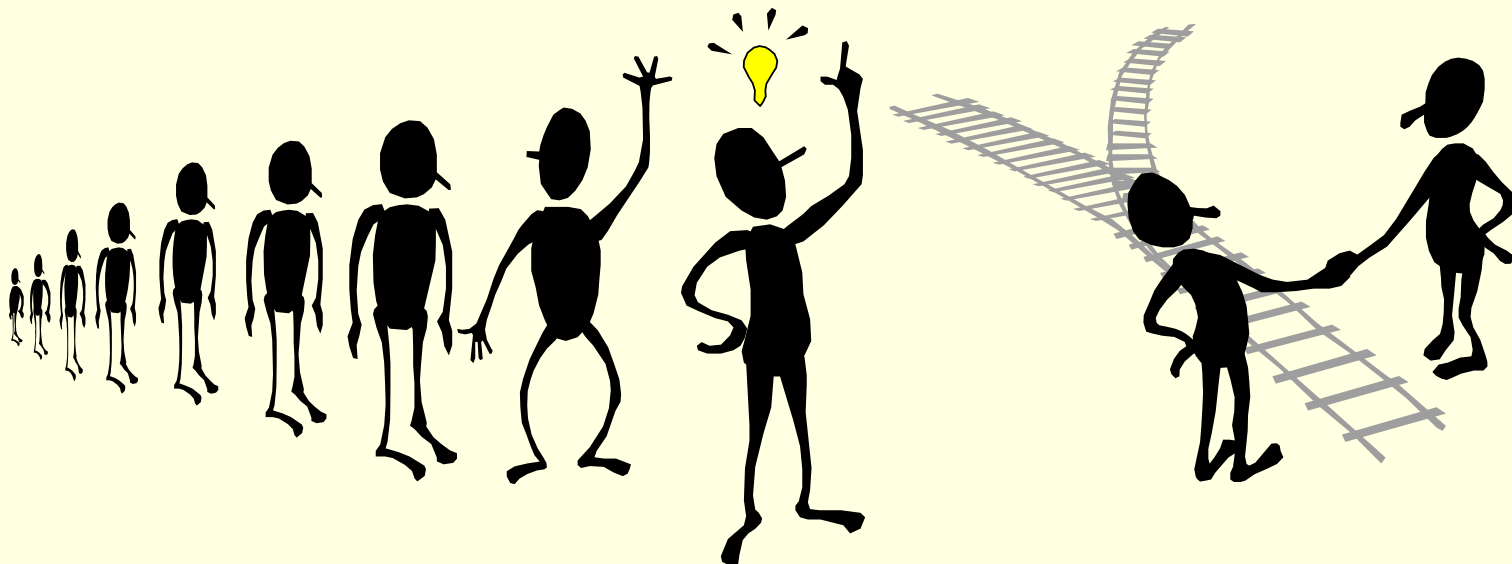
# Advantages of a PTEC™ Degree

- Completion of degree can be accomplished in approximately 2 years
- Required for employment as an operator
- Some entry level salaries @ approx. \$50,000
- 401K, health, dental and other benefits
- National and worldwide portability



# Will I Really Be Hired?

- Job demand currently outstrips supply
- Plants test all but take top graduates first
- Grades are of great importance
- Work ethic is important
- **ATTITUDE IS CRITICAL!**



# Program Costs

---

- Total tuition cost at STCC is \$5,000.00
- Tuition cost per semester is approximately \$720.00
- Pell Grants and student loans are available
- TOPS and TOPS Tech scholarships are accepted
- Additional fees may apply



# Transferability

---

- Gen Ed courses are on the Board of Regents' Transfer Matrix of all public colleges and universities in Louisiana
- Technical education courses are accepted\* for transfer by other colleges on a course-by-course or credit exam basis
  - *\* at the discretion of the receiving institution*



# Why a PTEC™ Degree?

---

